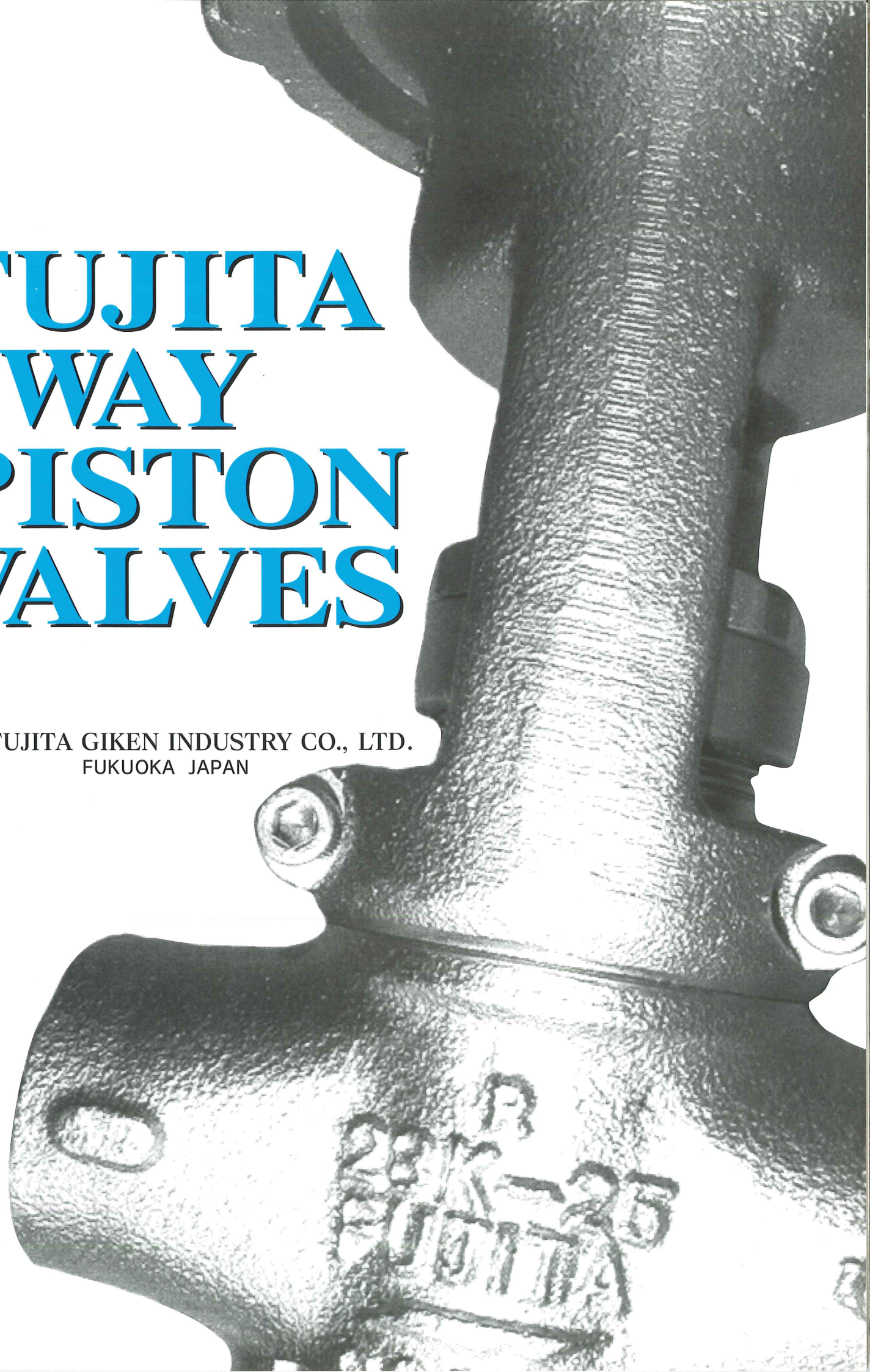


FUJITA 3WAY PISTON VALVES

 FUJITA GIKEN INDUSTRY CO., LTD.
FUKUOKA JAPAN





FUJITA 3-WAY PISTON VALVES (RC THREAD TYPE) P3WR-RC1 Series

FLUID	Steam, Oil, Hot&Cold Water, Nonflammable Gas
OPERATING PRESSURE	MAX.3.2Mpa (32kgf/cm ² : 460PSI)
TEMPERATURE	MAX.205 °C
PIROT AIR PRESSURE	0.25~0.35Mpa (2.5~3.5kgf/cm ² : 36-51PSI)

BSPT AND NPT THREADS ARE AVAILABLE ON OPTION.

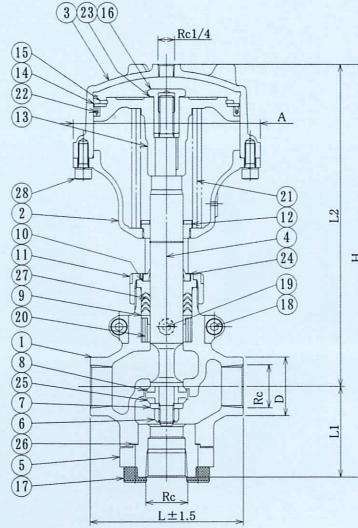
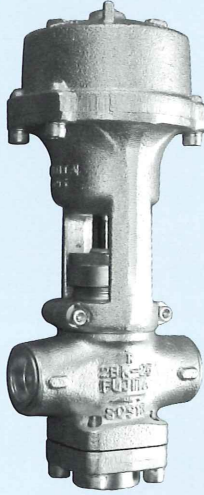
流体	蒸気油、温水、冷水、ガス、ガソリン、空気
圧力	MAX.3.2Mpa (32kgf/cm ² : 460PSI)
温度	MAX.205 °C
操作空気圧	0.25~0.35Mpa (2.5~3.5kgf/cm ² : 36-51PSI)

ねじ接続の標準は、JIS RCです。BSPT、NPTも製作可能

MODEL-NO	Rc	D	L	L1	L2	H	A	Weight (kg)
P3WR-RC1-8A	1/4	30	85	50	165	215	93	2.8
P3WR-RC1-10A	3/8	30	85	50	165	215	93	2.8
P3WR-RC1-15A	1/2	30	85	50	165	215	93	2.8
P3WR-RC1-20A	3/4	40	110	66	196	262	100	3.9
P3WR-RC1-25A	1	46	120	71	230	301	126	6
P3WR-RC1-32A	1 1/4	56	145	92	250	342	147	9

D.G.C MARK	PARTS	NO
1	BODY	1
2	YOKE STAND	1
3	CYLINDER	1
4	STEM	1
5	LOWER SEAT FLANGE	1
6	U-NUT	1
7	GUIDE WASHER	1
8	DISC ADAPTER	1
9	RING WASHER	1
10	GLAND	1
11	GRAND NUT	1
12	GUIDE BUSH	1
13	PISTON	1
14	SET RING PLATE	1
15	RETAINING RING	1
16	TENSION NUT	1
17	CAP SCREW	4
18	CAP SCREW	2
19	CAP SCREW	1
20	PACKING SPRING	1
21	SPRING	1
22	PISTON RING	1
23	GASKET	1
24	DUST SEAL	1set
25	DISC RING	2
26	LOWER SEAT GASKET	1
27	PACKING	1set
28	BOLT	4

REDUCE FLOW TYPE レジュースポア



FUJITA 3-WAY PISTON VALVES (FLANGE TYPE) P3WR-RF1 Series

FLUID	Steam, Oil, Hot&Cold Water, Nonflammable Gas
OPERATING PRESSURE	MAX.3.2Mpa (32kgf/cm ² : 460PSI)
TEMPERATURE	MAX.205 °C
PIROT AIR PRESSURE	0.25~0.35Mpa (2.5~3.5kgf/cm ² : 36-51PSI)

DIN AND ANSI FLANGES ARE AVAILABLE ON OPTION.

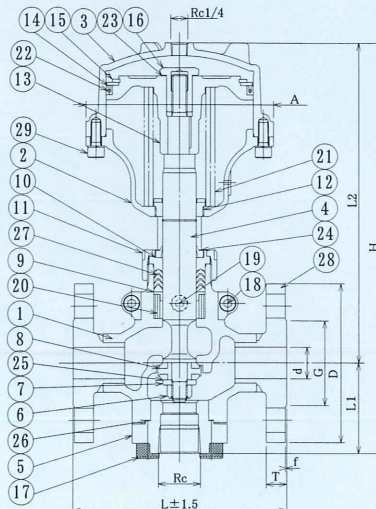
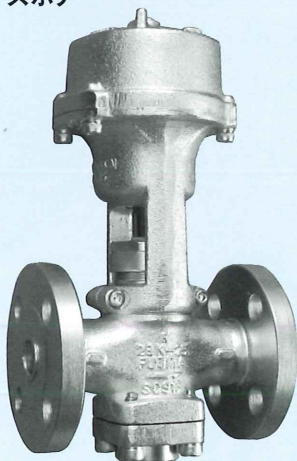
流体	蒸気油、温水、冷水、ガス、ガソリン、空気
圧力	MAX.3.2Mpa (32kgf/cm ² : 460PSI)
温度	MAX.205 °C
操作空気圧	0.25~0.35Mpa (2.5~3.5kgf/cm ² : 36-51PSI)

フランジ接続の標準は、JIS20kRFです。ANSI、DINフランジも製作可能

MODEL-NO	Port Dia d	Screw Rc	face to Face L	FLANGE-SIZE					BOLT			L1	L2	H	A	Weight (kg)
				D	C	G	T	f	N	h	S					
P3WR-RF1-8A	10	1/4	146	90	65	46	14	1	4	15	M12	50	165	215	93	4.3
P3WR-RF1-10A	10	3/8	146	90	65	46	14	1	4	15	M12	50	165	215	93	4.3
P3WR-RF1-15A	15	1/2	146	95	70	51	14	1	4	15	M12	50	165	215	93	4.3
P3WR-RF1-20A	20	3/4	146	100	75	56	16	1	4	15	M12	66	196	262	100	5.7
P3WR-RF1-25A	25	1	167	125	90	67	16	1	4	19	M16	71	230	301	126	9
P3WR-RF1-32A	32	1 1/4	190	135	100	76	18	2	4	19	M16	92	250	343	147	12.8

D.G.C MARK	PARTS	NO
1	BODY	1
2	YOKE STAND	1
3	CYLINDER	1
4	STEM	1
5	LOWER SEAT FLANGE	1
6	U-NUT	1
7	GUIDE WASHER	1
8	DISC ADAPTER	1
9	RING WASHER	1
10	GLAND	1
11	GRAND NUT	1
12	GUIDE BUSH	1
13	PISTON	1
14	SET RING PLATE	1
15	RETAINING RING	1
16	TENSION NUT	1
17	CAP SCREW	4
18	CAP SCREW	2
19	CAP SCREW	1
20	PACKING SPRING	1
21	SPRING	1
22	PISTON RING	1
23	GASKET	1
24	DUST SEAL	1set
25	DISC RING	2
26	LOWER SEAT GASKET	1
27	PACKING	1set
28	FLANGE	2
29	BOLT	4

REDUCE FLOW TYPE レジュースポア



FUJITA 3-WAY PISTON VALVES (RC THREAD TYPE) P3W-RC1 Series

FLUID	Steam, Oil, Hot&Cold Water, Nonflammable Gas
OPERATING PRESSURE	MAX.3.2Mpa (32kgf/cm ² : 460PSI)
TEMPERATURE	MAX.205 °C
PIROT AIR PRESSURE	0.25~0.35Mpa (2.5~3.5kgf/cm ² : 36-51PSI)

BSPT AND NPT THREADS ARE AVAILABLE ON OPTION.

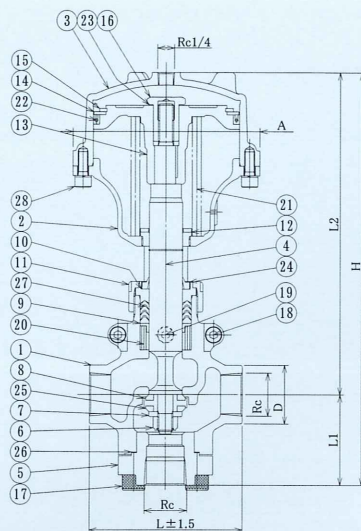
流体	蒸気油, 温水, 冷水, ガス, ガソリン, 空気
圧力	MAX.3.2Mpa (32kgf/cm ² : 460PSI)
温度	MAX.205 °C
操作空気圧	0.25~0.35Mpa (2.5~3.5kgf/cm ² : 36-51PSI)

ねじ接続の標準は、JIS RCです。BSPT, NPTも製作可能

MODEL-NO	Rc	D	L	L1	L2	H	A	Weight (kg)
P3W-RC1-10A	3/8	30	85	50	165	215	93	2.8
P3W-RC1-15A	1/2	30	85	50	165	215	93	3.7
P3W-RC1-20A	3/4	40	110	66	196	262	100	6.4
P3W-RC1-25A	1	46	120	71	230	301	126	9
P3W-RC1-32A	1 1/4	56	145	92	250	342	147	15
P3W-RC1-40A	1 1/2	62	150	92	295	387	189	15

D.G.C MARK	PARTS	NO
1	BODY	1
2	YOKE STAND	1
3	CYLINDER	1
4	STEM	1
5	LOWER SEAT FLANGE	1
6	U-NUT	1
7	GUIDE WASHER	1
8	DISC ADAPTER	1
9	RING WASHER	1
10	GLAND	1
11	GRAND NUT	1
12	GUIDE BUSH	1
13	PISTON	1
14	SET RING PLATE	1
15	RETAINING RING	1
16	TENSION NUT	1
17	CAP SCREW	4
18	CAP SCREW	2
19	CAP SCREW	1
20	PACKING SPRING	1
21	SPRING	1
22	PISTON RING	1
23	GASKET	1
24	DUST SEAL	1set
25	DISC RING	2
26	LOWER SEAT GASKET	1
27	PACKING	1set
28	CAP SCREW	4

FULL FLOW TYPE フルボア



FUJITA 3-WAY PISTON VALVES (FLANGE TYPE) P3W-RF1 Series

FLUID	Steam, Oil, Hot&Cold Water, Nonflammable Gas
OPERATING PRESSURE	MAX.3.2Mpa (32kgf/cm ² : 460PSI)
TEMPERATURE	MAX.205 °C
PIROT AIR PRESSURE	0.25~0.35Mpa (2.5~3.5kgf/cm ² : 36-51PSI)

DIN AND ANSI FLANGES ARE AVAILABLE ON OPTION.

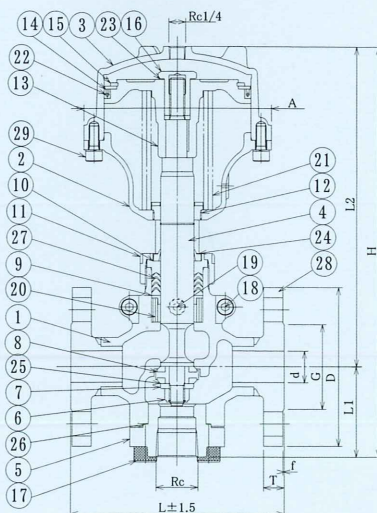
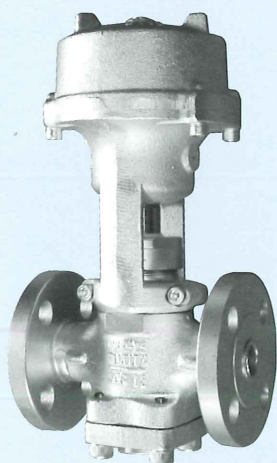
流体	蒸気油, 温水, 冷水, ガス, ガソリン, 空気
圧力	MAX.3.2Mpa (32kgf/cm ² : 460PSI)
温度	MAX.205 °C
操作空気圧	0.25~0.35Mpa (2.5~3.5kgf/cm ² : 36-51PSI)

フランジ接続の標準は、JIS20kRFです。ANSI, DINフランジも製作可能

MODEL-NO	Port Dia d	Screw Rc	face to Face L	FLANGE-SIZE								L1	L2	H	A	Weight (kg)
				D	C	G	T	f	N	h	S					
P3W-RF1-10A	10	3/8	146	90	65	46	14	1	4	15	M12	50	165	215	93	4.3
P3W-RF1-15A	15	1/2	146	95	70	51	14	1	4	15	M12	50	165	215	93	5.7
P3W-RF1-20A	20	3/4	146	100	75	56	16	1	4	15	M12	66	196	262	100	9
P3W-RF1-25A	25	1	167	125	90	67	16	1	4	19	M16	71	230	301	126	12.8
P3W-RF1-32A	32	1 1/4	190	135	100	76	18	2	4	19	M16	92	250	343	147	18.8
P3W-RF1-40A	40	1 1/2	190	140	105	81	18	2	4	19	M16	92	295	387	189	18.8

D.G.C MARK	PARTS	NO
1	BODY	1
2	YOKE STAND	1
3	CYLINDER	1
4	STEM	1
5	LOWER SEAT FLANGE	1
6	U-NUT	1
7	GUIDE WASHER	1
8	DISC ADAPTER	1
9	RING WASHER	1
10	GLAND	1
11	GRAND NUT	1
12	GUIDE BUSH	1
13	PISTON	1
14	SET RING PLATE	1
15	RETAINING RING	1
16	TENSION NUT	1
17	CAP SCREW	4
18	CAP SCREW	2
19	CAP SCREW	1
20	PACKING SPRING	1
21	SPRING	1
22	PISTON RING	1
23	GASKET	1
24	DUST SEAL	1set
25	DISC RING	2
26	LOWER SEAT GASKET	1
27	PACKING	1set
28	FLANGE	2
29	CAP SCREW	4

FULL FLOW TYPE フルボア





FUJITA 4-WAY PISTON VALVES (RC THREAD TYPE)

P4WS Series

FLUID	Cold Water
OPERATING PRESSURE	MAX.3.0Mpa (30kgf/cm ² : 430PSI)
TEMPERATURE	MAX.65 °C
PIROT AIR PRESSURE	0.25~0.35Mpa (2.5~3.5kgf/cm ² : 36-51PSI)

BSPT AND NPT THREADS ARE AVAILABLE ON OPTION.

流体	油, 温水, 冷水, 空気
圧力	MAX.3.0Mpa (30kgf/cm ² : 430PSI)
温度	MAX.65 °C
操作空気圧	0.25~0.35Mpa (2.5~3.5kgf/cm ² : 36-51PSI)

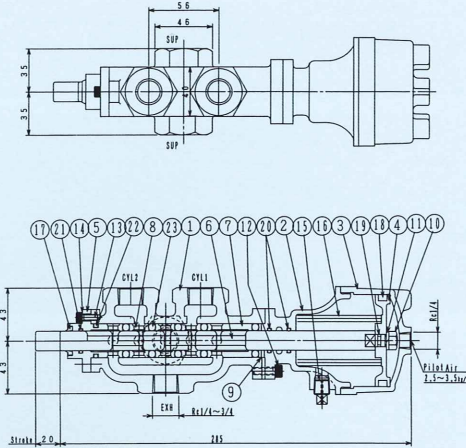
ねじ接続の標準は、JIS RCです。BSPT,NPTも製作可能

MODEL-NO	Rc	Weight(kg)
P4WS-8A	1/4	4.7
P4WS-10A	3/8	4.7
P4WS-15A	1/2	4.7
P4WS-20A	3/4	4.7

D.G.C MARK	PARTS	NO
1	BODY	1
2	CYLINDER-COVER	1
3	CYLINDER	1
4	PISTON	1
5	HEAD-COVER	1
6	PISTON-ROD	1
7	LONG-LANTERN-RING	1
8	LANTERN-RING	3
9	WASHER	1
10	PISTON-ROD-NUT	1
11	SPRING-WASHER	1
12	CAP-SCREW	4
13	CAP-SCREW	2
14	SPRING-WASHER	2
15	PLUG	1
16	SPRING	1
17	DUST-SEAL	1set
18	O-RING	1
19	O-RING	1
20	O-RING	2
21	O-RING	1
22	O-RING	1
23	O-RING	5

SINGLE ACTION

片押



FUJITA 4-WAY PISTON VALVES (RC THREAD TYPE)

P4WD Series

FLUID	Cold Water
OPERATING PRESSURE	MAX.3.0Mpa (30kgf/cm ² : 430PSI)
TEMPERATURE	MAX.65 °C
PIROT AIR PRESSURE	0.25~0.35Mpa (2.5~3.5kgf/cm ² : 36-51PSI)

BSPT AND NPT THREADS ARE AVAILABLE ON OPTION.

流体	油, 温水, 冷水, 空気
圧力	MAX.3.0Mpa (30kgf/cm ² : 430PSI)
温度	MAX.65 °C
操作空気圧	0.25~0.35Mpa (2.5~3.5kgf/cm ² : 36-51PSI)

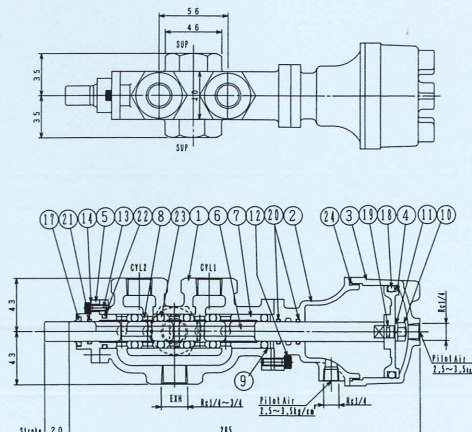
ねじ接続の標準は、JIS RCです。BSPT,NPTも製作可能

MODEL-NO	Rc	Weight(kg)
P4WD-8A	1/4	4.6
P4WD-10A	3/8	4.6
P4WD-15A	1/2	4.6
P4WD-20A	3/4	4.6

D.G.C MARK	PARTS	NO
1	BODY	1
2	CYLINDER-COVER	1
3	CYLINDER	1
4	PISTON	1
5	HEAD-COVER	1
6	PISTON-ROD	1
7	LONG-LANTERN-RING	1
8	LANTERN-RING	3
9	WASHER	1
10	PISTON-ROD-NUT	1
11	SPRING-WASHER	1
12	CAP-SCREW	4
13	CAP-SCREW	2
14	SPRING-WASHER	2
15		
16		
17	DUST-SEAL	1set
18	O-RING	1
19	O-RING	1
20	O-RING	1
21	O-RING	2
22	O-RING	1
23	O-RING	5
24	O-RING	1

DOUBLE ACTION

両押





FUJITA COMPACT 4-WAY PISTON VALVES (RC THREAD TYPE) C4WS Series

FLUID	Cold Water
OPERATING PRESSURE	MAX.3.0Mpa (30kgf/cm ² : 430PSI)
TEMPERATURE	MAX.65 °C
PIROT AIR PRESSURE	0.25~0.35Mpa (2.5~3.5kgf/cm ² : 36-51PSI)

BSPT AND NPT THREADS ARE AVAILABLE ON OPTION.

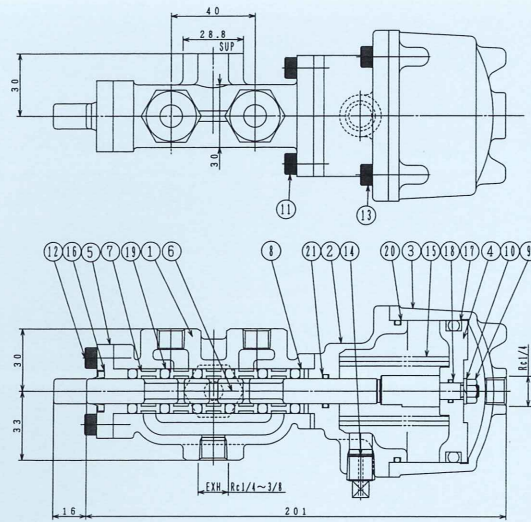
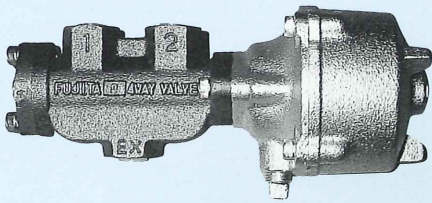
流体	油, 温水, 冷水, 空気
圧力	MAX.3.0Mpa (30kgf/cm ² : 430PSI)
温度	MAX.65 °C
操作空気圧	0.25~0.35Mpa (2.5~3.5kgf/cm ² : 36-51PSI)

ねじ接続の標準は、JIS RCです。BSPT,NPTも製作可能

MODEL-NO	Rc	Weight (kg)
C4WS-8A	1/4	2.4
C4WS-10A	3/8	2.4

D.G.C MARK	PARTS	NO
1	BODY	1
2	CYLINDER-COVER	1
3	CYLINDER	1
4	PISTON	1
5	HEAD-COVER	1
6	PISTON-ROD	1
7	LANTERN-RING	3
8	WASHER	1
9	PISTON-ROD-NUT	1
10	SPRING-WASHER	1
11	CAP-SCREW	2
12	CAP-SCREW	2
13	CAP-SCREW	4
14	PLUG	1
15	SPRING	1
16	DUST-SEAL	1set
17	O-RING	1
18	O-RING	1
19	O-RING	6
20	O-RING	1
21	O-RING	1

SINGLE ACTION コンパクト 片押



FUJITA COMPACT 4-WAY PISTON VALVES (RC THREAD TYPE) C4WD Series

FLUID	Cold Water
OPERATING PRESSURE	MAX.3.0Mpa (30kgf/cm ² : 430PSI)
TEMPERATURE	MAX.65 °C
PIROT AIR PRESSURE	0.25~0.35Mpa (2.5~3.5kgf/cm ² : 36-51PSI)

BSPT AND NPT THREADS ARE AVAILABLE ON OPTION.

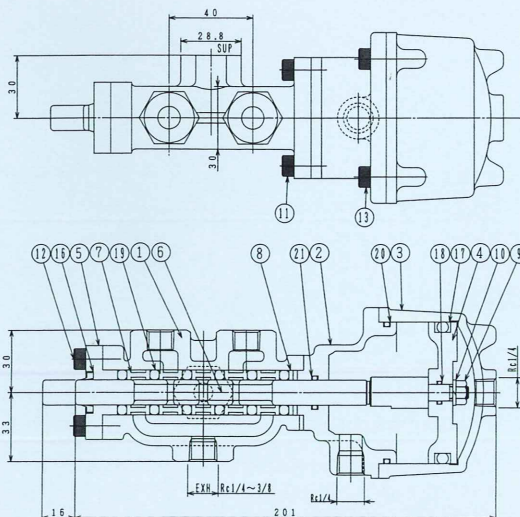
流体	油, 温水, 冷水, 空気
圧力	MAX.3.0Mpa (30kgf/cm ² : 430PSI)
温度	MAX.65 °C
操作空気圧	0.25~0.35Mpa (2.5~3.5kgf/cm ² : 36-51PSI)

ねじ接続の標準は、JIS RCです。BSPT,NPTも製作可能

MODEL-NO	Rc	Weight (kg)
C4WD-8A	1/4	2.3
C4WD-10A	3/8	2.3

D.G.C MARK	PARTS	NO
1	BODY	1
2	CYLINDER-COVER	1
3	CYLINDER	1
4	PISTON	1
5	HEAD-COVER	1
6	PISTON-ROD	1
7	LANTERN-RING	3
8	WASHER	1
9	PISTON-ROD-NUT	1
10	SPRING-WASHER	1
11	CAP-SCREW	2
12	CAP-SCREW	2
13	CAP-SCREW	4
14		
15		
16	DUST-SEAL	1set
17	O-RING	1
18	O-RING	1
19	O-RING	6
20	O-RING	1
21	O-RING	1

DOUBLE ACTION コンパクト 両押





FUJITA DIAPHRAGM OPERATED CONTROL VALVES (RC THREAD AND FLANGE TYPE) DKV Series

FLUID	Steam & Nonflammable Gas
OPERATING PRESSURE	MAX.1.7Mpa (17kgf/cm ² : 246PSI)
TEMPERATURE	MAX.205 °C
PIROT AIR PRESSURE	0.02~0.1Mpa (0.2~1.0kgf/cm ² : 2.9-14.5PSI)

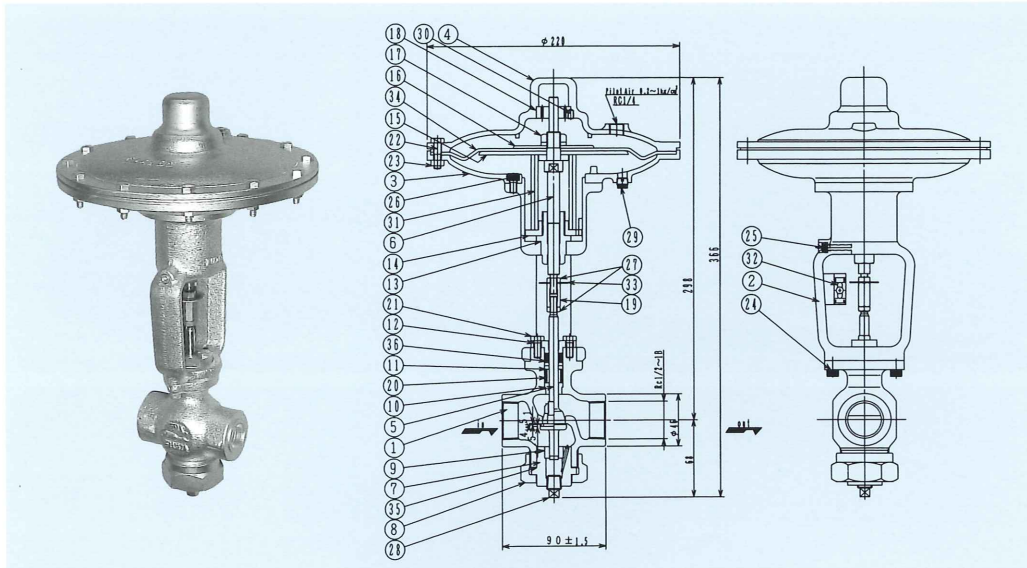
BSPT AND NPT THREADS ARE AVAILABLE ON OPTION.
DIN AND ANSI FLANGES ARE AVAILABLE ON OPTION.

流体	蒸気 温水,冷水,ガス
圧力	MAX.1.7Mpa (17kgf/cm ² : 246PSI)
温度	MAX.205 °C
操作空気圧	0.02~0.1Mpa (0.2~1.0kgf/cm ² : 2.9-14.5PSI)

ねじ接続の標準は、JIS RCです。BSPT,NPTも製作可能
フランジ接続の標準は、JIS10kRFです。ANSI,DINフランジも製作可能

MODEL-NO	Rc	Weight(kg)
DKV-RC-15A	1/2	7.2
DKV-RC-20A	3/4	7.2
DKV-RC-25A	1	7.2

D.G.C MARK	PARTS	NO
1	BODY	1
2	YOKE STAND	1
3	DIAPHRAGM COVER	1
4	DIAPHRAGM CASE	1
5	STEM	1
6	DIAPHRAGM ROD	1
7	DISC GUIDE	1
8	DISC GUIDE NUT	1
9	DISC GUIDE BUSH	1
10	STEM GUIDE	1
11	PACKING WASHER	1
12	GLAND	1
13	ROD GUIDE	1
14	SPRING SEAT	1
15	DIAPHRAGM PLATE	1
16	DIAPHRAGM PLATE	1
17	LOCK NUT	1
18	ROD GUIDE BUSH	1
19	JOINT NUT	1
20	PACKING SPRING	1
21	GRAND BOLT	2
22	CASE BOLT	12
23	CASE BOLT NUT	12
24	CAP SCREW	2
25	CAP SCREW	1
26	CAP SCREW	6
27	SET NUT	2
28	PLUG	1
29	PLUG	1
30	SET SCREW	1
31	SPRING	1
32	LIFT GAUGE	1
33	LIFT GAUGE RING	1
34	DIAPHRAGM	1
35	GASKET	1
36	GLAND PACKING	1set



FUJITA LIFT CHECK VALVES (THREAD AND FLANGE TYPE) YC Series

FLUID	Steam, Oil, Hot&Cold Water, Nonflammable Gas
OPERATING PRESSURE	MAX.3.2Mpa (32kgf/cm ² : 460PSI)
TEMPERATURE	MAX.205 °C

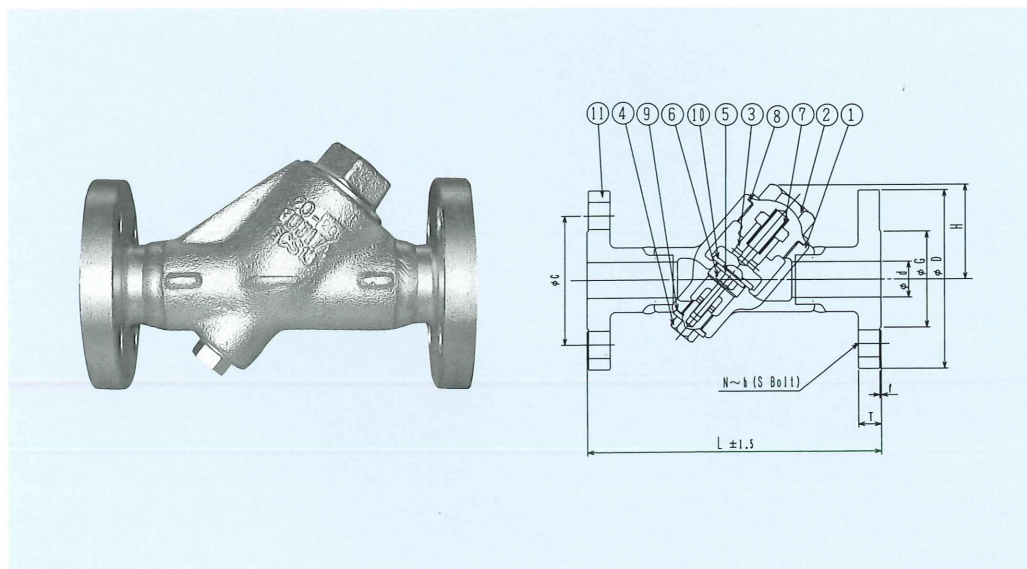
BSPT AND NPT THREADS ARE AVAILABLE ON OPTION.
DIN AND ANSI FLANGES ARE AVAILABLE ON OPTION.

流体	蒸気 油, 温水,冷水,ガス,ガソリン,空気
圧力	MAX.3.2Mpa (32kgf/cm ² : 460PSI)
温度	MAX.205 °C

ねじ接続の標準は、JIS RCです。BSPT,NPTも製作可能
フランジ接続の標準は、JIS20kRFです。ANSI,DINフランジも製作可能

MODEL-NO	Port Dia d	face to Face L	FLANGE-SIZE										Weight (kg)
			D	C	G	T	f	BOLT			H	Lift	
YC-RF-15A	15	178	95	70	51	14	1	4	15	M12	68	8	3.2
YC-RF-20A	20	178	100	75	56	16	1	4	15	M12	68	8	3.3
YC-RF-25A	25	203	125	90	67	16	1	4	19	M16	68	8	4.9
YC-RF-32A	32	216	135	100	76	18	2	4	19	M16	89	11	7
YC-RF-40A	40	229	140	105	81	18	2	4	19	M16	89	11	7.2

D.G.C MARK	PARTS	NO
1	BODY	1
2	COVER	1
3	DISC	1
4	PLUG GUIDE	1
5	DISC SEAT WASHER	1
6	DISC NUT	1
7	SPRING	1
8	COVER GASKET	1
9	PLUG GASKET	1
10	DISC SEAT	1
11	FLANGE	2





FUJITA STEAM REGULATORS (RC THREAD AND FLANGE TYPE)

SRV/D Series

FLUID	Steam & Nonflammable Gas
OPERATING PRESSURE	MAX.1.3Mpa (13kgf/cm ² : 188PSI)
TEMPERATURE	MAX.205 °C

BSPT AND NPT THREADS ARE AVAILABLE ON OPTION.
DIN AND ANSI FLANGES ARE AVAILABLE ON OPTION.

流体	蒸気 ガス
圧力(1次側)	MAX.1.3Mpa (13kgf/cm ² : 188PSI)
温度	MAX.205 °C

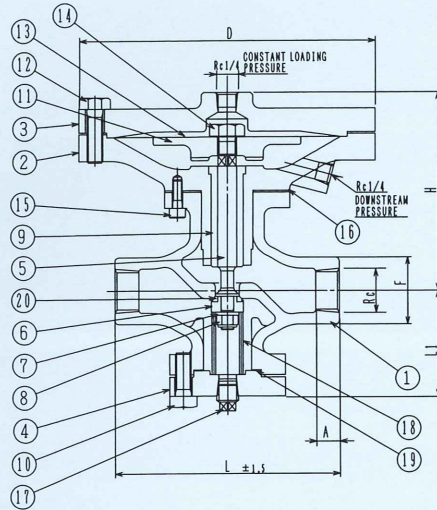
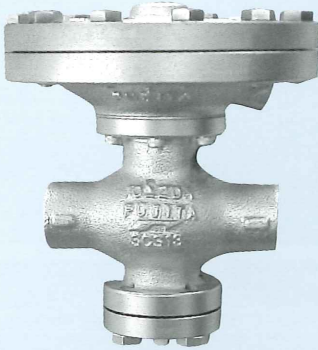
ねじ接続の標準は、JIS RCです。BSPT,NPTも製作可能
フランジ接続の標準は、JIS10kRFです。ANSI,DINフランジも製作可能

MODEL-NO	Rc	L	A	F	H	L1	D	Lift	Weight (kg)
SRV/D-RC-20A	3/4	140	14.1	42	128	67	186	3.5	9.7
SRV/D-RC-25A	1	165	16.2	50	148	79	235	5	13.5

D.G.C MARK	PARTS	NO
1	BODY	1
2	DIAPHRAGM BOX	1
3	DIAPHRAGM COVER	1
4	BOTTOM COVER	1
5	STEM	1
6	DISC ADAPTER	1
7	WASHER	1
8	U-NUT	1
9	STEM GUIDE	1
10	BOLT	4
11	DIAPHRAGM PLATE	1
12	COVER BOLT	12
13	DIAPHRAGM	2
14	SET-BOLT	1
15	CAP-SCREW	6
16	GASKET	1
17	PLUG	1
18	SPRING	1
19	GASKET	1
20	DISC-RING	1

DIAPHRAGM OPERATED

ダイヤフラム式



FUJITA STEAM REGULATORS (RC THREAD AND FLANGE TYPE)

SRV/B Series

FLUID	Steam & Nonflammable Gas
OPERATING PRESSURE	MAX.1.5Mpa (15kgf/cm ² : 215PSI)
TEMPERATURE	MAX.210 °C

BSPT AND NPT THREADS ARE AVAILABLE ON OPTION.
DIN AND ANSI FLANGES ARE AVAILABLE ON OPTION.

流体	蒸気 ガス
圧力(1次側)	MAX.1.5Mpa (15kgf/cm ² : 215PSI)
温度	MAX.210 °C

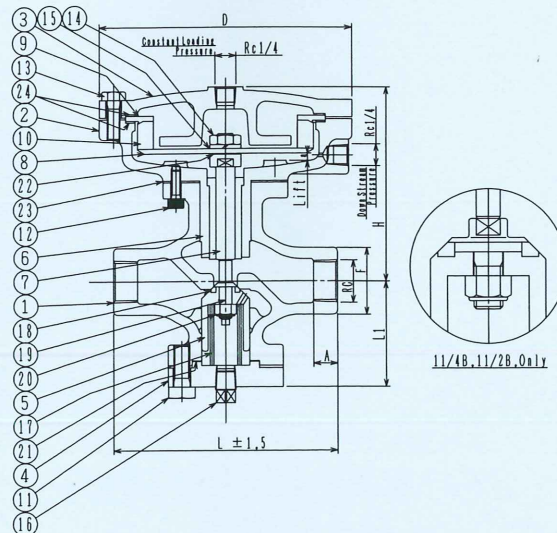
ねじ接続の標準は、JIS RCです。BSPT,NPTも製作可能
フランジ接続の標準は、JIS10kRFです。ANSI,DINフランジも製作可能

MODEL-NO	Screw RC	End to End L	Screw Length A	Out Dia F	Center to Top H	Center to Bottom L1	Lift a	Cylinder Out Dia D	Weight (kg)
SRV/B-RC-20A	3/4B	140	14.1	42	120	67	3.5	158	7.2
SRV/B-RC-25A	1B	165	16.2	50	136	79	5	175	10
SRV/B-RC-32A	1 1/4B	203	18	65	203	97	8	300	30.2
SRV/B-RC-40A	1 1/2B	203	18	65	203	97	8	300	30.2

D.G.C MARK	PARTS	NO
1	BODY	1
2	CYLINDER BOX	1
3	COVER	1
4	BOTTOM COVER	1
5	DISC	1
6	ROD GUIDE	1
7	CENTER ROD	1
8	SEAL PLATE	1
9	SEAL PLATE	1
10	BELLOWS	1set
11	BOLT	1set
12	CAP SCREW	1set
13	BOLT	1set
14	NUT	1
15	SPRING WASHER	1
16	PLUG	1
17	SPRING	1
18	DISC RING	1
19	DISC RING SET BOLT	1
20	U-NUT	1
21	GASKET	1
22	ROD GASKET	1
23	FLANGE GASKET	1
24	DIAPHRAGM GASKET	2

BELLOWS OPERATED

ベローズ式





FUJITA 3-WAY PISTON VALVES (RC THREAD TYPE) P3W-RC2 Series

FLUID	Steam, Oil, Hot&Cold Water, Nonflammable Gas
OPERATING PRESSURE	MAX.3.2Mpa (32kgf/cm ² : 460PSI)
TEMPERATURE	MAX.205 °C
PIROT AIR PRESSURE	0.25~0.35Mpa (2.5~3.5kgf/cm ² : 36-51PSI)

BSPT AND NPT THREADS ARE AVAILABLE ON OPTION.

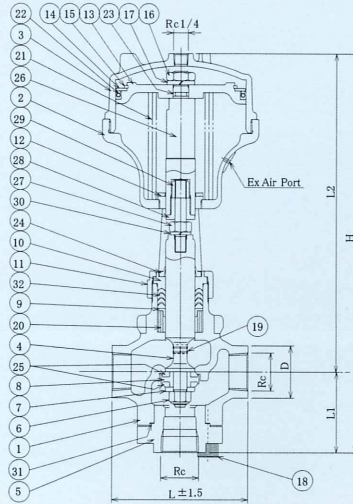
流体	蒸気油, 温水, 冷水, ガス, ガソリン, 空気
圧力	MAX.3.2Mpa (32kgf/cm ² : 460PSI)
温度	MAX.205 °C
操作空気圧	0.25~0.35Mpa (2.5~3.5kgf/cm ² : 36-51PSI)

ねじ接続の標準は、JIS RCです。BSPT,NPTも製作可能

MODEL-NO	Rc	D	L	L1	L2	H	A	Weight (kg)
P3W-RC2-15A	1/2	32	85	50	202	252	93	3.3
P3W-RC2-20A	3/4	40	110	66	252	318	115	6.1
P3W-RC2-25A	1	46	120	71	281	352	138	9
P3W-RC2-32A	1 1/4	56	145	92	321	413	175	14.2
P3W-RC2-40A	1 1/2	62	150	92	321	413	175	14.2

D.G.C MARK	PARTS	NO
1	BODY	1
2	YOKE STAND	1
3	CYLINDER	1
4	STEM	1
5	LOWER SEAT FLANGE	1
6	U-NUT	1
7	GUIDE WASHER	1
8	DISC ADAPTER	1
9	RING WASHER	1
10	GLAND	1
11	GRAND NUT	1
12	GUIDE BUSH	1
13	PISTON	1
14	SET RING PLATE	1
15	RETAINING RING	1
16	NUT	1
17	SPRING WASHER	1
18	SOKET SCREW BOLT	4
19	SOKET SCREW BOLT	2
20	PACKING SPRING	1
21	SPRING	1
22	PISTON RING	1
23	O-RING	1
24	DUST SEAL	1set
25	DISC RING	2
26	PISTON ROD	1
27	TENTION BOLT	1
28	COMPRESS NUT	1
29	SETTING NUT	1
30	SPRING WASHER	1
31	LOWER SEAT GASKET	1
32	GLAND PACKING	1set
33		

FULL FLOW 2-STEM TYPE フルボアタイプ



FUJITA 3-WAY PISTON VALVES (FULL FLOW TYPE, FLANGE TYPE) P3W-RF2 Series

FLUID	Steam, Oil, Hot&Cold Water, Nonflammable Gas
OPERATING PRESSURE	MAX.3.2Mpa (32kgf/cm ² : 460PSI)
TEMPERATURE	MAX.205 °C
PIROT AIR PRESSURE	0.25~0.35Mpa (2.5~3.5kgf/cm ² : 36-51PSI)

DIN AND ANSI FLANGES ARE AVAILABLE ON OPTION.

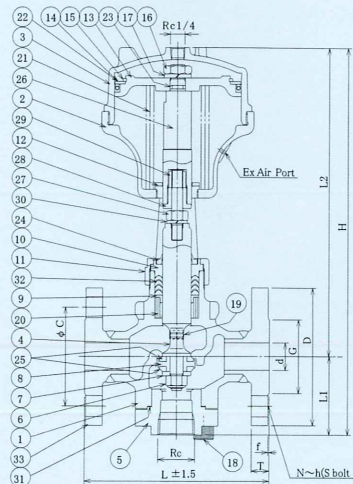
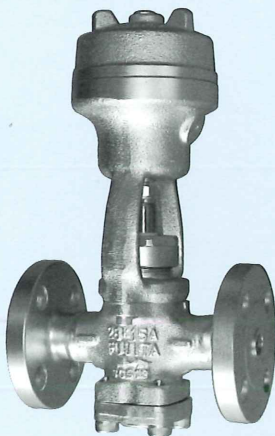
流体	蒸気油, 温水, 冷水, ガス, ガソリン, 空気
圧力	MAX.3.2Mpa (32kgf/cm ² : 460PSI)
温度	MAX.205 °C
操作空気圧	0.25~0.35Mpa (2.5~3.5kgf/cm ² : 36-51PSI)

フランジ接続の標準は、JIS20kRFです。ANSI,DINフランジも製作可能

MODEL-NO	Port Dia d	Screw Rc	face to Face L	FLANGE-SIZE										L1	L2	H	A	Weight (kg)
				D	C	G	T	f	N	h	S	M12	M16					
P3W-RF2-15A	15	1/2	146	95	70	51	14	1	4	15	M12	50	202	252	92	4.8		
P3W-RF2-20A	20	3/4	146	100	75	56	16	1	4	15	M12	66	252	318	115	7.8		
P3W-RF2-25A	25	1	167	125	90	67	16	1	4	19	M16	71	281	352	138	12		
P3W-RF2-32A	32	1 1/4	190	135	100	76	18	2	4	19	M16	92	321	413	175	18		
P3W-RF2-40A	40	1 1/2	190	140	105	81	18	2	4	19	M16	92	321	413	175	18.2		

D.G.C MARK	PARTS	NO
1	BODY	1
2	YOKE STAND	1
3	CYLINDER	1
4	STEM	1
5	LOWER SEAT FLANGE	1
6	U-NUT	1
7	GUIDE WASHER	1
8	DISC ADAPTER	1
9	RING WASHER	1
10	GLAND	1
11	GRAND NUT	1
12	GUIDE BUSH	1
13	PISTON	1
14	SET RING PLATE	1
15	RETAINING RING	1
16	NUT	1
17	SPRING WASHER	1
18	SOKET SCREW BOLT	4
19	SOKET SCREW BOLT	2
20	PACKING SPRING	1
21	SPRING	1
22	PISTON RING	1
23	O-RING	1
24	DUST SEAL	1set
25	DISC RING	2
26	PISTON ROD	1
27	TENTION BOLT	1
28	COMPRESS NUT	1
29	SETTING NUT	1
30	SPRING WASHER	1
31	LOWER SEAT GASKET	1
32	GLAND PACKING	1set
33	FRANGE	2

FULL FLOW 2-STEM TYPE フルボアタイプ





FUJITA KNUCKLE JOINTS (RC THREAD TYPE) NJ Series

FLUID	Steam, Oil, Hot&Cold Water, Nonflammable Gas
OPERATING PRESSURE	MAX.3.2Mpa (32kgf/cm ² : 460PSI)
TEMPERATURE	MAX.205 °C

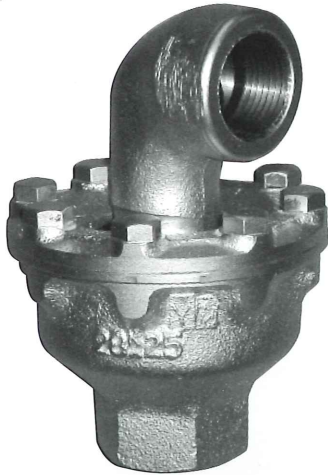
BSPT AND NPT THREADS ARE AVAILABLE ON OPTION.
STAINLESS BODIES ARE AVILABLE ON OPTION.

流体	蒸気油,温水,冷水,ガス
圧力	MAX.3.2Mpa (32kgf/cm ² : 460PSI)
温度	MAX.205 °C

ねじ接続の標準は、JIS RCです。BSPT,NPTも製作可能
標準ボデーは、FCDです。ステンレスボデーも製作可能

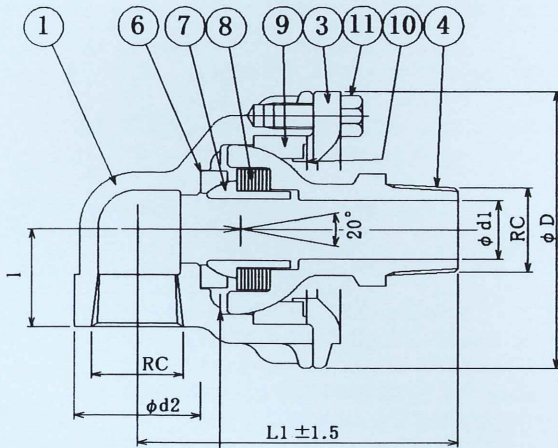
Size	Rc	d1	d2	L1	L2	L3	L4	1	D
15A	1/2B	13	32	84	82	75	91	30	70
20A	3/4B	19	38	97	95	92	100	30	85
25A	1B	23	46	110	120	110	120	38	100
32A	1 1/4B	30	58	120	145	140	136	45	118
40A	1 1/2B	36	64	140	150	140	150	55	126

D.G.C MARK	PARTS	NO
1	BODY-(ELBOW)	1
2	BODY-(STRAIGHT)	1
3	COVER	1
4	BALL-JOINT (STRAIGHT)	1
5	BALL-JOINT (ELBOW)	1
6	BALL-WASHER	1
7	INNER-BALL	1
8	MDS-SPRING	1set
9	SEAL-SPRING	1
10	L-RING	1
11	BOLT	6~8
12	SPACER-RING	1



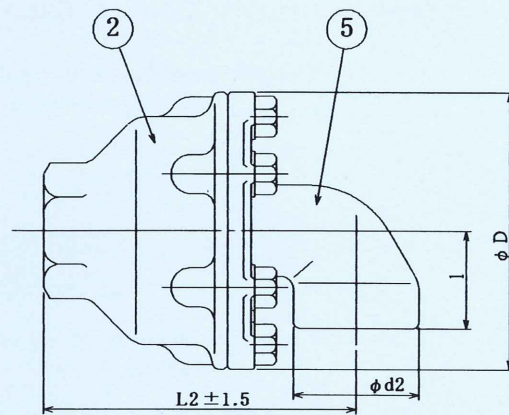
Order Code

NJ- Model - Size

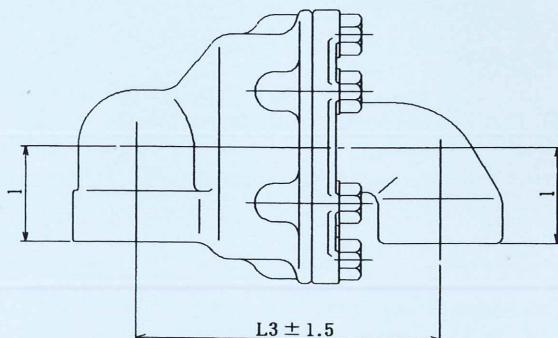


⑫ Inlet Spacer Ring
Swing Angle -2° Max

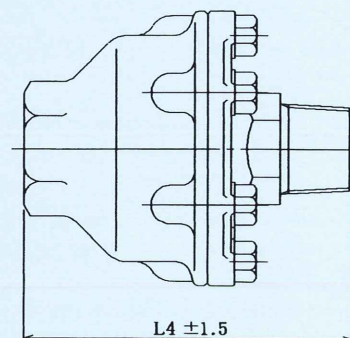
MODEL :1 (20° Angle)
1S (NO Angle)



MODEL :2 (20° Angle)
2S (NO Angle)



MODEL :3 (20° Angle)
3S (NO Angle)



MODEL :4 (20° Angle)
4S (NO Angle)

MEMO

FUJITA GIKEN INDUSTRY CO., LTD.

FUKUOKA JAPAN

Model No./Order Code

3方ピストン弁：3way Piston Valve

フルボア：Full Flow

P3W	-	※1 RC RF	-	※2 1 or 2	-	Size サイズ	-	※3 Option 特殊仕様	-	※4 Operating Type 特殊仕様
-----	---	-------------	---	--------------	---	-------------	---	-------------------	---	---------------------------

レジュースボア：Reduce Flow

P3WR	-	※1 RC RF	-	※2 1 or 2	-	Size サイズ	-	※3 Option 特殊仕様	-	※4 Operating Type 特殊仕様
------	---	-------------	---	--------------	---	-------------	---	-------------------	---	---------------------------

- ※1 配管接続タイプ:Type of Connection
RF (Jis20kフランジ:Jis 20k Flanges:DIN and ANSI Flanges are available on option.)
RC (ねじ込:Jis RC Thread:BSPT and NPT Threads are available on option.)
- ※2 ピストン弁タイプ(フルボアのみ選択):Type of Valve(Full Flow only)
1 (1本式:1 Stem Type) 2 (2本式:2 Stem Type)
- ※3 特殊仕様(特殊仕様のみ明記願います):Option
S (オールSUS(流体に接する部品全てSUS304):Stainless Type)
FS (フランジSUS:Flanges-SUS)
FLS (フランジ,ロアシートSUS:Flanges & Lower seat Flanges-SUS)
- ※4 作動仕様:Operating Type 標準は,NCです。 :Based on NC
NO (常時開:逆作動 Normally Open-Air to shut)

減圧弁：Steam Regulator Valve

膜板式：Diaphragm Operating

SRV/D	-	※4 RC RF	-	Size サイズ	-	※5 Option 特殊仕様
-------	---	-------------	---	-------------	---	-------------------

ベロー式：Bellows Operating

SRV/B	-	※4 RC RF	-	Size サイズ	-	※5 Option 特殊仕様
-------	---	-------------	---	-------------	---	-------------------

- ※4 配管接続タイプ:Type of Connection
RF (Jis20kフランジ:Jis 20k Flanges:DIN and ANSI Flanges are available on option.)
RC (ねじ込:Jis RC Thread:BSPT and NPT Threads are available on option.)
- ※5 特殊仕様(特殊仕様のみ明記願います):Option
FS (フランジSUS:Flanges-SUS)

Y型リフトチャッキ弁：Y-Type Check Valve

YC	-	※6 RC RF	-	Size サイズ	-	※7 Option 特殊仕様
----	---	-------------	---	-------------	---	-------------------

- ※6 配管接続タイプ:Type of Connection
RF (Jis20kフランジ:Jis 20k Flanges:DIN and ANSI Flanges are available on option.)
RC (ねじ込:Jis RC Thread:BSPT and NPT Threads are available on option.)
- ※5 特殊仕様(特殊仕様のみ明記願います):Option
S (オールSUS(流体に接する部品全てSUS304):Stainless Type)
FS (フランジSUS:Flanges-SUS)

4方ピストン弁：4way Piston Valve

片押し：Single Action

P4WS	-	Size サイズ	-	※8 Option 特殊仕様
------	---	-------------	---	-------------------

両押し：Double Action

P4WD	-	Size サイズ	-	※8 Option 特殊仕様
------	---	-------------	---	-------------------

コンパクト片押し：Compact Type-Single Action

C4WS	-	8A or 10A	-	※8 Option 特殊仕様
------	---	-----------	---	-------------------

コンパクト両押し：Compact Type-Double Action

C4WD	-	8A or 10A	-	※8 Option 特殊仕様
------	---	-----------	---	-------------------

- ※8 標準は,RCで,明記不要です。
Based on JIS RC Thread:BSPT and NPT Threads are available on option.

コントロール弁：Diaphragm Operated Control Valve

DKV	-	※9 RC RF	-	Size サイズ	-	※10 Option 特殊仕様	-	※11 Cv-Value Cv-値	-	※12 Operating Type 作動仕様
-----	---	-------------	---	-------------	---	--------------------	---	----------------------	---	----------------------------

- ※9 配管接続タイプ:Type of Connection
RF (Jis20kフランジ:Jis 20k Flanges:DIN and ANSI Flanges are available on option.)
RC (ねじ込:Jis RC Thread:BSPT and NPT Threads are available on option.)
- ※10 特殊仕様(特殊仕様のみ明記願います):Option
FS (フランジSUS:Flanges-SUS)
- ※11 15AのみCV値設定願います。標準は,3です。:CV-Value For:Based on CV.3
1=Cv.1 3=Cv.3 8=Cv.8
- ※12 作動仕様:Operating Type 標準は,NCです。 :Based on NC
NO (常時開:逆作動 Normally Open-Air to shut)



FUJITA GIKEN INDUSTRY CO., LTD.

Head Office

456-1, Toyohara Yamato Yanagawa Fukuoka 839-0242, Japan

Phone: 81-944-73-5100

Fax: 81-944-73-0500

Email: sales@fujita-giken.com

URL: <http://www.fujita-giken.com>

フジタ技研工業株式会社

本社

〒839-0242 福岡県柳川市大和町豊原456-1

Phone: 0944-73-5100

Fax: 0944-73-0500

Email: sales@fujita-giken.com

URL: <http://www.fujita-giken.com>

Sales-Agency
販売代理店

©2006 FUJITA GIKEN INDUSTRY CO., LTD. All rights reserved
不許複製。このドキュメントに記載された内容は、予告なく変更することがあります。
Designs and Specifications are subject to change without notice