

Section 6 Replaceable Parts

Parts Ordering	6-2
Mounting Kits	6-2
Repair Kits	6-2
Parts List	6-3
Type DLC3010 Digital Level Controllers	6-3
Transducer Assembly	6-4
Terminal Box Assembly	6-5
Terminal Box Cover Assembly	6-5
Mounting Parts	6-6
249 Series Sensor with Heat Insulator	6-6



DLC3000 Series

Table 6-1. Mounting Kits

	FISHER 249 SERIES	MASONEILAN		YAMATAKE NQP	FOXBORO-ECKARDT	
		12100 or 12800	12200 or 12300		144LD	LP167
Without Heat Insulator	---	28B5742X012	28B8444X012	GB0101X0012	29B5900X012	29B8480X012
With Heat Insulator	28B5741X012	28B5743X012	28B8445X012	GB0105X0012	29B8491X012	---

Parts Ordering

Whenever corresponding with your Emerson Process Management sales office about this equipment, always mention the controller serial number. When ordering replacement parts, refer to the 11-character part number of each required part as found in the following parts list. Parts that do not show part numbers are not orderable.

Mounting Kits

Heat Insulator Kit, for mounting Type DLC3010 on 249 Series sensor. Includes heat insulator (key 57), cap screws (key 61), shaft extension (key 58), shaft coupling (key 59), and set screws (key 60).

28B5741X012

6

WARNING

Use only genuine Fisher replacement parts. Components that are not supplied by Emerson Process Management, should not, under any circumstances, be used in any Fisher instrument. The use of components not manufactured by Emerson Process Management will void your warranty, might adversely affect the performance of the instrument, and could give rise to personal injury and property damage.



Note

Contact your Emerson Process Management sales office for information on the availability of additional mounting kits.

Parts Kits

Description	Part Number
1* Small Hardware Spare Parts Kit	19B1643X032
Includes	Qty/kit
Screw (key 7)	1
Set Screw (key 20)	2
Set Screw (key 31)	2
Test Terminal (key 24)	4
Wire Retainer (key 25)	8
Lock Washer (key 31)	1
Alarm Jumper (key 35)	2
Header Assembly (key 38)	2
Washer, Lock, Spring (key 47),	1
Clamp Nut (key 76)	1
2* Spare O-Rings Kit	19B1643X022
Includes three each of keys 21, 26, and 27	

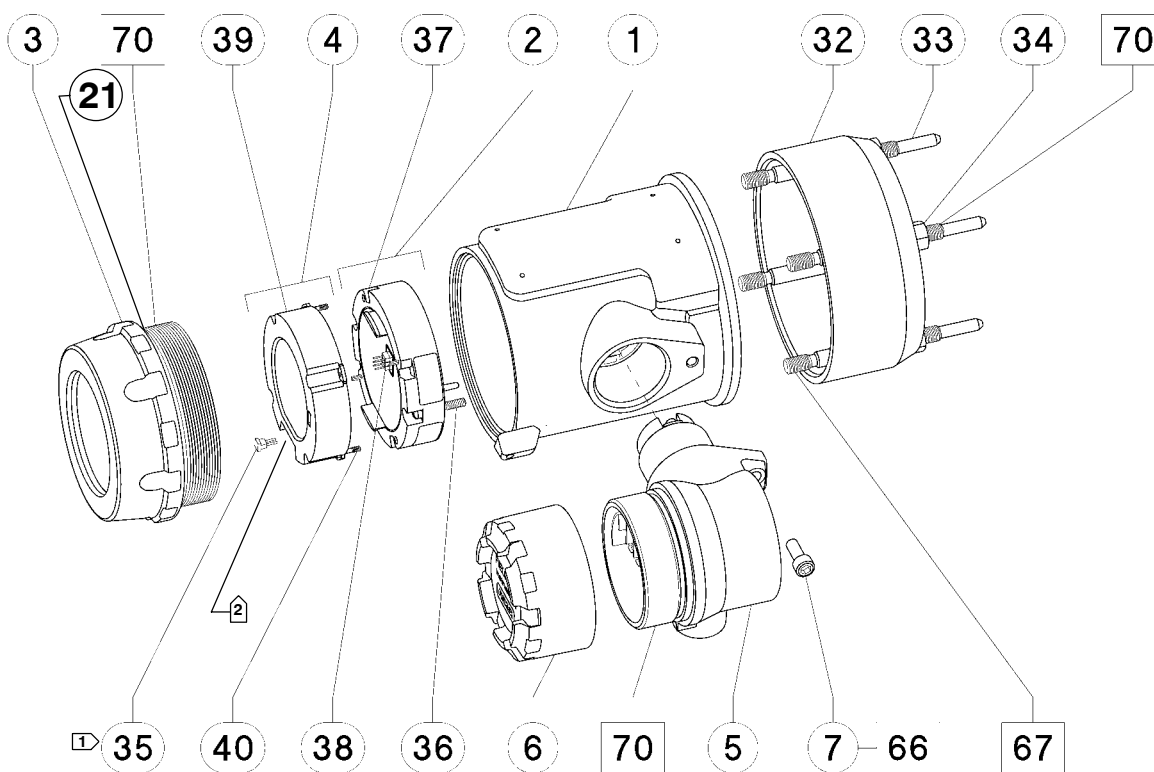


Note

Neither Emerson, Emerson Process Management nor any of their affiliate entities assumes responsibility for the selection, use, and maintenance of any product. Responsibility for the selection, use, and maintenance of any product remains with the purchaser and end-user.

* Recommended spare part

Replaceable Parts



NOTES:

- 1 INSTALL ALARM JUMPER (KEY 35) ON ELECTRONICS ASSEMBLY (KEY 2) WHEN LCD METER (KEY 4) IS NOT INSTALLED.
- 2 LOCATION OF ALARM JUMPER (KEY 35) WHEN LCD METER (KEY 4) IS INSTALLED.

APPLY LUB/THREADLOCK
58B5510-C/IL

Figure 6-1. DLC3000 Series Digital Level Controller Assembly

Parts List

Key Description

Part Number

Type DLC3010 Digital Level Controllers (figure 6-1)

Key	Description	Part Number
1	Transducer Module ⁽¹⁾	GE18497X012
2	Electronics Ass'y, includes alarm jumper (key 35) and captive screws (key 36), and header ass'y (key 38) and captive screws (key 40) For use with transducer module 48B5763X012 (has obsolete Hall sensor on Flex circuit) For use with transducer module GE18497X012 (has new Hall sensor on rigid boards)	18B5529X022 18B5529X032 38B5734X012
3	Cover Assy, includes O-ring (key 21)	38B5734X012
4	LCD Meter Ass'y, includes alarm jumper (key 35) and captive screws (key 36), and header ass'y (key 38) and captive screws (key 40)	28B5738X012
5	Terminal Box Ass'y	28B5740X022

Key	Description	Part Number
6	Terminal Box Cover Ass'y, includes labels (key 30 and 64) and set screw (key 31)	28B5531X012
7*	Screw, hex socket ⁽²⁾	11B9076X042
8	Nameplate	
9	Drive Screw, 18-8 SST	1A368228982
21*	O-ring, nitrile ⁽³⁾	1K1810X0012
32	Adaptor Ring, A03600	1N10160G012
33	Stud, SST (4 req'd)	1N10162G012
34	Hex Nut, 304 SST (4 req'd)	1N10252G012
35*	Alarm Jumper ⁽²⁾	18B5733X012
36	Screw, captive, 18-8 SST For electronics ass'y (2 req'd)	18B5732X022
38*	Header Assembly, dual row (not shown) ⁽²⁾	18B5736X012
40	Screw, captive, 18-8 SST For LCD meter (2 req'd)	18B5732X012
66	Anti-Seize Sealant (not furnished with instrument)	
67	Thread locking adhesive (medium strength) (not furnished with instrument)	
70	Lithium grease (not furnished with instrument)	

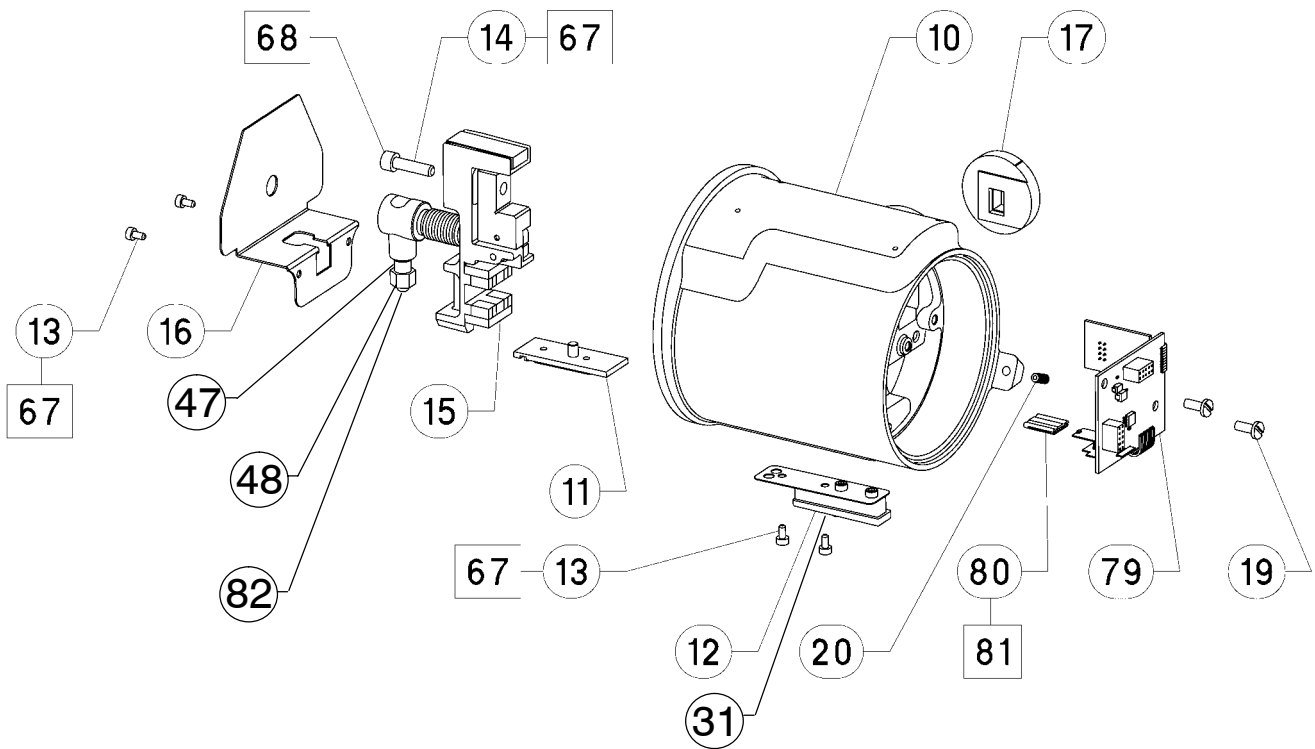
* Recommended spare part

1. These parts are not replaced in the field due to serialization and characterization issues, but can be replaced at a qualified service center. Contact your Emerson Process Management sales office for additional information.

2. Included in small hardware spare parts kit.

3. Included in spare O-rings kit.

DLC3000 Series



GE18497 / DOC

Figure 6-2. DLC3000 Series Digital Level Controller Transducer Assembly

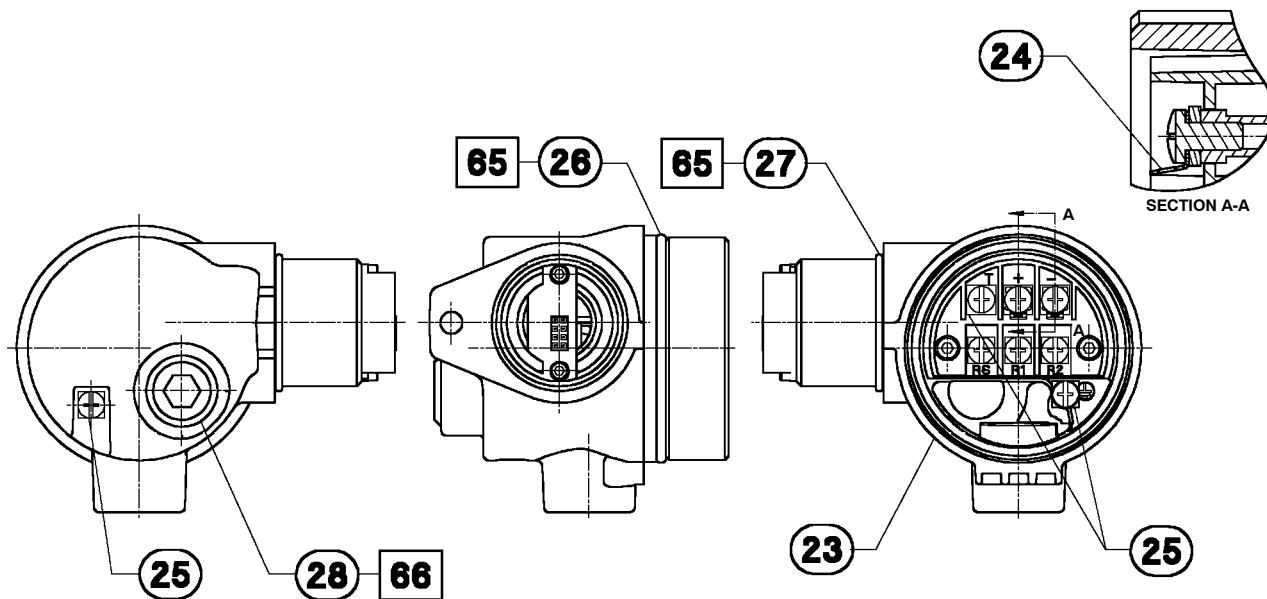
Key	Description	Part Number	Key	Description	Part Number
			20*	Set Screw, 18-8 SST ⁽²⁾	18B5516X012
			31*	Set Screw, hex socket, 18-8 SST ⁽²⁾	18B5517X012
			47	Spring Lock Washer, 18-8 SST ⁽²⁾	19B0819X012
			48	Clamp Nut, 18-8 SST ⁽²⁾	19B5497X012
			67	Thread Locking adhesive (medium strength) (not furnished with instrument)	
			68	Sealant	
			79	Transducer Board Assembly ⁽¹⁾	GE14863X012
			80	Hall Guard	GE15488X012
			81	Compound, silicone	
			82	Bolt, lock, coupling block, SST	28B5494X012
Transducer Assembly (figure 6-2)					
11	Inner Guide, aluminum	28B5482X012			
12	Handle Ass'y aluminum/SST	18B5522X012			
13	Screw, hex socket, 18-8 SST (4 req'd)	18B5513X012			
14	Screw, cap, 18-8 SST	18B5515X012			
15	Lever Assembly, aluminum/SST/NdFeB/CS	38B5509X022			
16	Coupling Shield, 18-8 SST	38B5485X012			
17	Ring, align/clamp	28B5479X022			
19	Machine Screw, pan head	18B5518X012			

* Recommended spare part

1. These parts are not replaced in the field due to serialization and characterization issues, but can be replaced at a qualified service center. Contact your Emerson Process Management sales office for additional information.

2. Included in small hardware spare parts kit.

Replaceable Parts



□ APPLY LUBRICANT
28B5740-B / DOC

Figure 6-3. Terminal Box Assembly

6

Key	Description	Part Number
-----	-------------	-------------

Terminal Box Assembly (figure 6-3)

24*	Test Terminal, 18-8 SST (2 req'd) ⁽²⁾	28B5716X012
25*	Wire Retainer, 18-8 SST (8 req'd) ⁽²⁾	18B5532X012
26*	O-Ring, nitrile ⁽³⁾	1H8762X0012
27*	O-Ring, nitrile ⁽³⁾	10A8218X032
28	Pipe Plug, 18-8 SST	1H5137X0012
65	Lubricant, Silicone (not furnished with instrument)	
66	Anti-Seize Sealant (not furnished with instrument)	

Terminal Box Cover Assembly (figure 6-4)

30	Label, internal, plastic	28B5721X012
31*	Set Screw, hex socket, 18-8 SST ⁽²⁾	18B5517X012
64	Label, external	18B5537X012

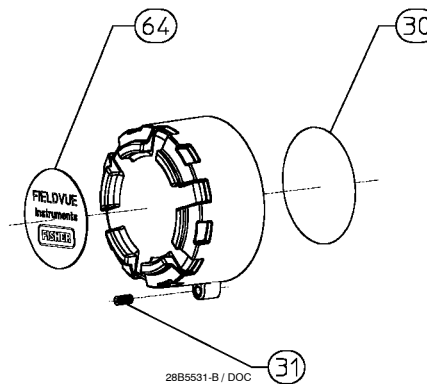


Figure 6-4. Terminal Box Cover Assembly

* Recommended spare part
1. Included in small hardware spare parts kit.
2. Included in spare O-rings kit.

Replaceable Parts

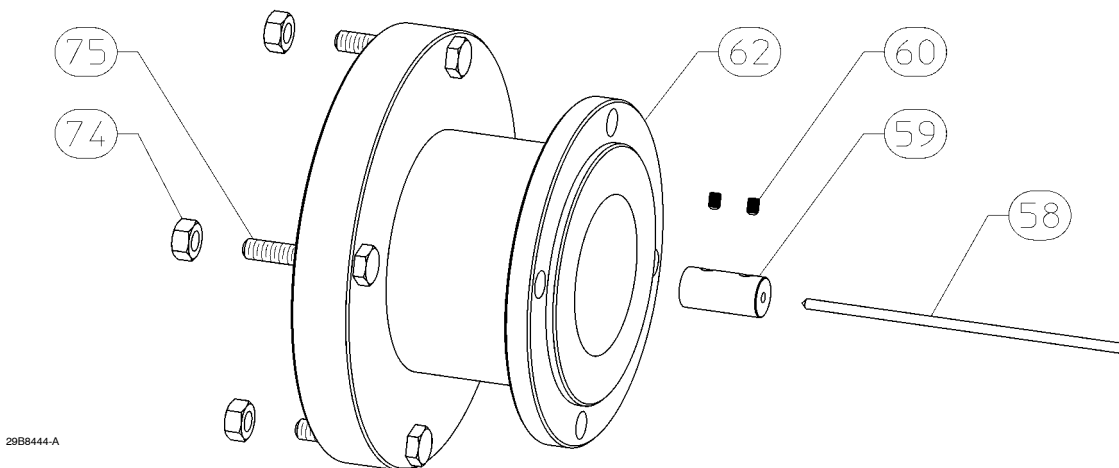


Figure 6-6. Mounting Kit for Masoneilan® 12200 and 12300 Sensor without Heat Insulator

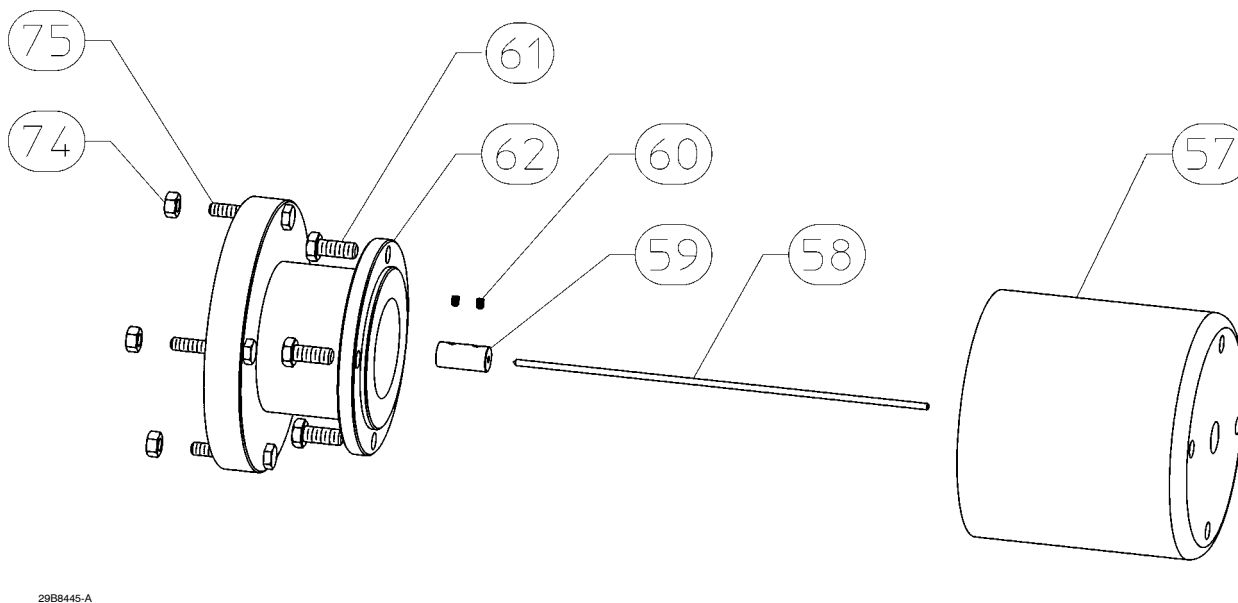


Figure 6-7. Mounting Kit for Masoneilan® 12200 and 12300 Sensor with Heat Insulator

Key	Description	Part Number	Key	Description	Part Number
12200 or 12300 without Heat Insulator			12200 or 12300 with Heat Insulator		
58	Shaft Extension N05500	1B681540022	57	Heat Insulator, S30400	22A0033X012
59	Shaft Coupling, S30300	1A577935032	58	Shaft Extension N05500	19B8446X012
60	Hex Socket Screw (2 req'd)	1E6234X0022	59	Shaft Coupling, S30300	1A577935032
62	Mounting Adaptor, A92024	39B8487X012	61	Hex Cap Screw, SST (4 req'd)	1A3816K0012
74	Hex Nut, SST (4 req'd)	1A3457K0012	62	Hex Socket Screw (2 req'd)	1E6234X0022
75	Hex Cap Screw, SST (4 req'd)	1A3904X0032	62	Mounting Adaptor, A92024	39B8487X012
			74	Hex Nut, SST (4 req'd)	1A3457K0012
			75	Hex Cap Screw, SST (4 req'd)	1A9304X0032
			78	Washer, plain (4 req'd) not shown	1B865928982

DLC3000 Series

Key Description

Yamatake NQP Sensor

Without Heat Insulator

Key	Description	Part Number
58	Shaft Extension, S31600	GB0099X0012
59	Shaft Retainer, S30400	GB0104X0012
60	Hex Socket Screw, SST	18B5517X012
62	Mounting Adaptor, A96061	GB0100X0012
63	Hex Socket Screw, SST (3 req'd)	1J6857X0012
71	Hex Socket Screw, SST (3 req'd)	18B5512X012
72	Shaft Adapter, S30400	GB0107X0012
73	Hex Socket Screw, SST (2 req'd)	1U8830X0012

With Heat Insulator

Key	Description	Part Number
57	Heat Insulator, S30400	22A0033X012
58	Shaft Extension, N05500	GB0103X0012
59	Shaft Retainer, S30400	GB0104X0012
60	Hex Socket Screw, SST	18B5517X012
61	Hex Cap Screw, SST (4 req'd)	1A3816K0012
62	Mounting Adaptor, A96061	GB0100X0012
63	Hex Socket Screw, SST (3 req'd)	1J6857X0012
71	Hex Socket Screw, SST (3 req'd)	18B5512X012
72	Shaft Adapter, S30400	GB0107X0012
73	Hex Socket Screw, SST (2 req'd)	1U8830X0012
78	Washer, plain (4 req'd)	1B865928982

Key Description

Foxboro®-Eckardt Sensors

144LD without Heat Insulator

Key	Description	Part Number
58	Shaft Extension, S31600	10B2396X012
59	Shaft Coupling, S30300	19B5898X012
60	Set Screw, hex socket, SST (2 req'd)	1E6234X0022
62	Mounting Adapter, A92024	39B5899X012
74	Hex Nut, steel (4 req'd)	19A4788X012
75	Hex Cap Screw, steel (4 req'd)	17B6153X012

144LD with Heat Insulator

Key	Description	Part Number
57	Heat Insulator, S30400	22A0033X012
58	Shaft Extension, 316 SST	11B1454X012
59	Shaft Coupling, S30300	19B5898X012
60	Set Screw, hex socket, SST (2 req'd)	1E6234X0022
61	Screw, hex hd, SST (4 req'd)	1A3816K0012
62	Mounting Adapter, A92024	39B5899X012
74	Hex Nut, steel (4 req'd)	19A4788X012
75	Hex Cap Screw, steel (4 req'd)	17B6153X012
78	Washer, plain (4 req'd)	1B865928982

LP167 without Heat Insulator

Key	Description	Part Number
58	Shaft Extension, S31600	19B8478X012
59	Shaft Coupling, S30300	19B5898X012
60	Set Screw, hex socket, SST (2 req'd)	1E6234X0022
62	Mounting Adapter, A92024	39B8479X012
63	Screw, hex socket, (4 req'd)	19B8477X012

6